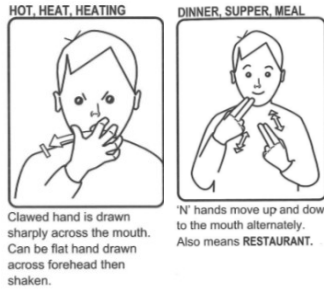
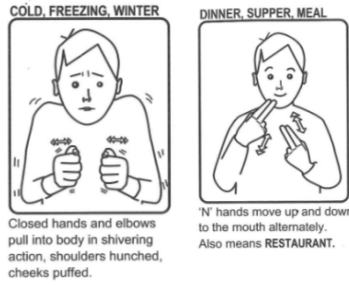


# Frequently used school signs

Hot Dinner



Cold Dinner



Sandwiches



Drink

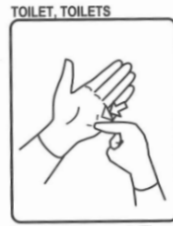


Milk



# Frequently used school signs

Toilet



TOILET, TOILETS  
Repeated fingerspelt 'T'.  
Varies.

Please



PLEASE, THANK YOU  
Tips of flat hand touch  
mouth, then hand swings  
forward/down to finish palm  
up.

Thank you



THANK YOU, APPRECIATE  
Tips of flat hand (or both  
hands) touch mouth, then  
hand swings forward/down to  
finish palm up. Also means  
GRATEFUL, GRATITUDE.

Stop



Taxi

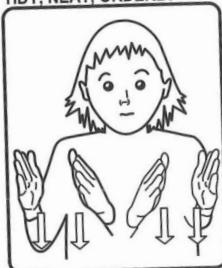


TAXI, CAB  
Middle finger clicks against  
thumb several times, held at  
head height.

# Frequently used school signs

Tidy up

TIDY, NEAT, ORDERLY



Palm facing flat hands make short movement down, move sideways and repeat.

Wash hands

WASH, WASH HANDS



Hands rub together, or rub on appropriate part of body. Also means SOAP.

Home time

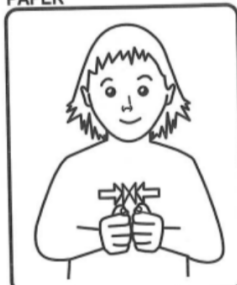
HOME TIME



Tips of flat hands contact at an angle (HOME) then R. index finger taps back of L. wrist (TIME).

Paper

PAPER

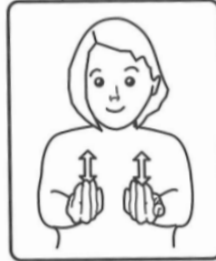


Knuckles of closed hands tap together twice. One of several **variations**.

# Frequently used school signs

Toast

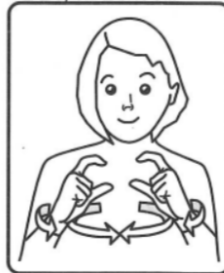
TOAST, TOASTER



Bent hands palm up (or palm down) make short movement up then down, or other *variation* in context.

Class

CLASS, CLASSROOM



'C' hands face each other then twist apart and round to finish touching with palms facing back. *Varies.*

Hall

HALL, ALLEY, LOBBY



Flat hands pointing up move forward from near head. 'N' hands can be used.

Work

WORK, CAREER, JOB



Edge of R. flat hand taps down twice at right angles onto the index finger edge of L. flat hand. Also means **EMPLOYMENT.**

Pencil

